

Zehnder ComfoTube 90mm



ComfoTube 90mm

The Zehnder ComfoTube 90mm is a high performance semi-rigid ductwork ideal for residential applications. The low profile manifolds and ductwork mean it's perfect for use in small ceiling voids and is strong enough to even be set into the building concrete structure. The clinside smooth internal lining help to reduce build up of dust and enable the ductwork to be cleaned, this has helped the ductwork achieve a hygiene certificate from the Hygiene Institute. The ductworks quality has also earned it the highly acclaimed SKZ certification in addition to meeting the minimum standard for PCDB accreditation.

The ductwork can be installed much faster than conventional ductwork with a reduced number of connections helping to reduce any potential air leakage within the system. The O-rings and locking slides also help to prevent the ductwork being disconnected during first fix and maintain an airtight seal. End caps are also provided to prevent dust ingress during first fix to maintain a hygienic system.

A variety of manifolds, ancillaries and terminations can be used with the ductwork in addition to a wide range of designer grilles. The ductwork can also be used with the unique modular ComfoWell manifolds with integrated attenuators and filters.

Key Features

- Easy and quick to install
- Airtight
- High-quality food-grade polyethylene (PE)
- Meets the minimum standard for PCDB accreditation
- Certified by the Hygiene Institute and SKZ certified
- Low pressure losses
- Easy to clean
- Suitable for installation in the building concrete structure
- Crush resistant ring stiffness of ~10.0 kN/m²
- Corrosion resistant
- Lightweight and easy to handle
- No sealant or tape required
- Wide range of manifolds and grille terminations
- Suitable for use with the unique modular ComfoWell manifolds

Article Numbers

Description	Product Code
Ductwork	
Zehnder ComfoTube ø 90mm, 50m roll	990 328 009
Zehnder ComfoTube ø 90mm, 20m roll	990 328 010
Manifold - See ComfoWell datasheet for all modular manifold options	
Zehnder ComfoTube distribution box 220, 1 x ø 125mm connection, 6 x ø 90mm ports with 4 x ø 110mm end caps	990 323 070
Zehnder ComfoTube distribution box 350, 1 x ø 125mm connection, 9 x ø 90mm ports with 6 x ø 110mm end caps	990 323 071
CLD Grille housing	
Grille housing CLD-P 90 frontal sleeve, height 115mm, connects 1 x ø 90mm Zehnder ComfoTube	990 320 845
Grille housing CLD-P 90 lateral sleeve, height 115mm, connects 1 x ø 90mm Zehnder ComfoTube	990 320 846
Grille housing CLD-P 90 frontal sleeve, height 140mm, connects 1 x ø 90mm Zehnder ComfoTube	990 320 851
Grille housing CLD-P 90 lateral sleeve, height 140mm, connects 1 x ø 90mm Zehnder ComfoTube	990 320 852

Article Numbers

TVA Grille housing

Grille housing TVA 90 connects 1 x ø 125mm valve to 2 x ø 90mm ports Zehnder ComfoTube, L198mm	990 320 712
Grille housing TVA-P 90 connects 1 x ø 125mm valve to 1 x ø 90mm Zehnder ComfoTube, L64mm	990 326 122
Grille housing TVA-P 90 connects 1 x ø 125mm valve to 1 x ø 90mm Zehnder ComfoTube, L300mm	990 326 126

Lamina / Bilamina Grille housing

Rectangular grille housing, 1 x ø 90mm connection to Lamina or Bilamina 400	990 321 643
Rectangular grille housing, 1 x ø 90mm connection to Lamina or Bilamina 600	990 321 661
Rectangular grille housing, 2 x ø 90mm connections to Lamina or Bilamina 600	990 321 662
Rectangular grille housing, 1 x ø 90mm, 2 x ø 75mm connection to Lamina or Bilamina 400	990 321 745

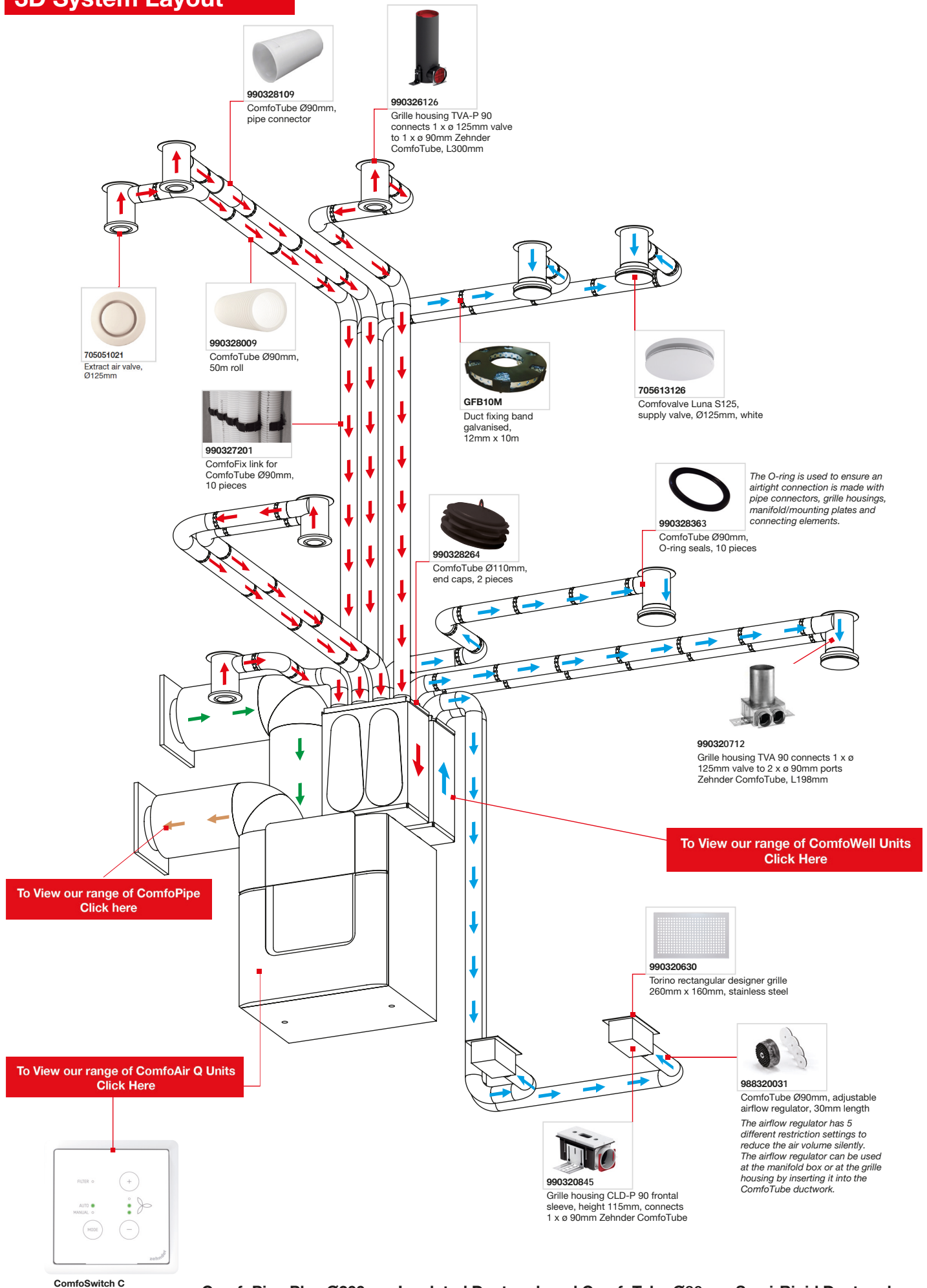
Renoventil Grille housing

Renoventil housing, for ø 90mm, length 400mm	990 320 062
----------------------------------------------	-------------

Ancillaries

Zehnder ComfoTube ø 90mm, adjustable airflow regulator, 30mm length	988 320 031
Zehnder ComfoTube ø 90mm, adjustable airflow regulator, 75mm length	990 320 027
Filter for ø 125mm extract air valve, ISO Coarse >45% (G3), 10 Pieces	990 320 032
Filter for CLD housing, ISO Coarse >45% (G3), 10 Pieces	990 320 573
Zehnder ComfoFresh Flat 51 to Zehnder ComfoTube ø 75/90mm convertor	990 322 013
Zehnder ComfoTube ø 90mm, 90° bend	990 322 153
Zehnder ComfoTube ø 75/90mm cross-piece	990 322 155
Zehnder ComfoTube ø 90mm, locking slides, 10 pieces	990 326 025
Grille housing TVA-P 75/90 mounting set for concrete application	990 326 127
90° metal bracket for max 2 Zehnder ComfoTube	990 327 109
Zehnder ComfoFix link for ComfoTube ø 90mm, 10 pieces	990 327 201
Zehnder ComfoTube ø 90mm, pipe connector	990 328 109
Zehnder ComfoTube ø 90mm, end caps, 10 pieces	990 328 263
Zehnder ComfoTube ø 110mm, end caps, 2 pieces	990 328 264
Zehnder ComfoTube ø 90mm, O-ring seal, 10 pieces	990 328 363

3D System Layout



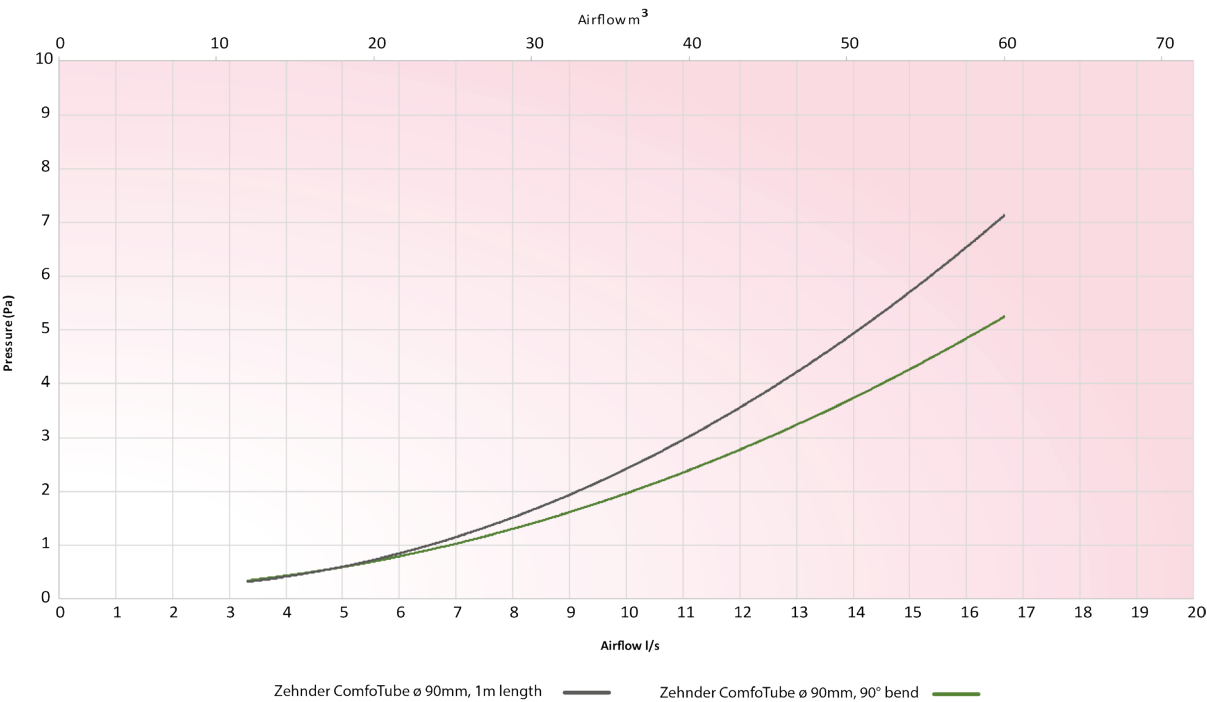
Zehnder ComfoTube ø 90mm, 20/50m roll

Article number: 990 328 010 / 990 328 009

Technical Specification

Material	High-quality food-grade polyethylene (PE)
Operating temperature range	"-25 to +60 °C"
Maximum recommended air volume per tube	13.8l/s (50m³/h)
Minimum bending radius	90mm
Minimum radius < 2 x diameter	Yes
Buoyancy in concrete	130 N/m
Outside diameter	90mm
Inside diameter	74mm
Weight per m	0.43 kg/m
Fire rating in accordance with DIN EN 13501-1	E
Ring stiffness	~10 kN/m2
BS EN ISO 9969:2007 crushability compliant	Yes
Coil diameter (50m roll)	1180mm
Coil height (50m roll)	470mm

Pressure Curve



Sound Data

	Octave Band (Hz) Insertion Loss, dB							
	63	125	250	500	1000	2000	4000	8000
Zehnder ComfoTube ø 90mm, 1m length		0.4	0.5	0.3	0.3	0.4	0.7	

Acoustic performance measured according to EN ISO 7235 (pink noise)

Zehnder ComfoTube distribution box 220, 1 x \varnothing 125mm connection, 6 x \varnothing 90mm ports with 4 x \varnothing 110mm end caps

Article number: 990 323 070

Description

Manifold:

Zehnder ComfoTube distribution box. Low profile compact design.

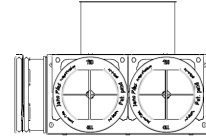
Suitable for use with the Zehnder ComfoTube \varnothing 90mm semi-rigid ductwork and comes complete with locking slides and end caps.

Suitable for installation in the building concrete structure

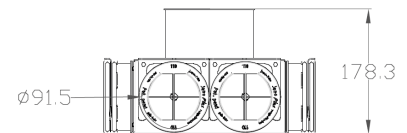


Dimensions

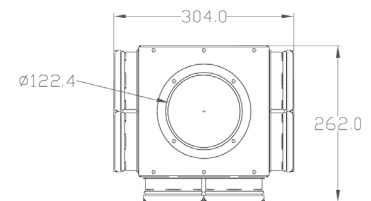
Side view



Front view



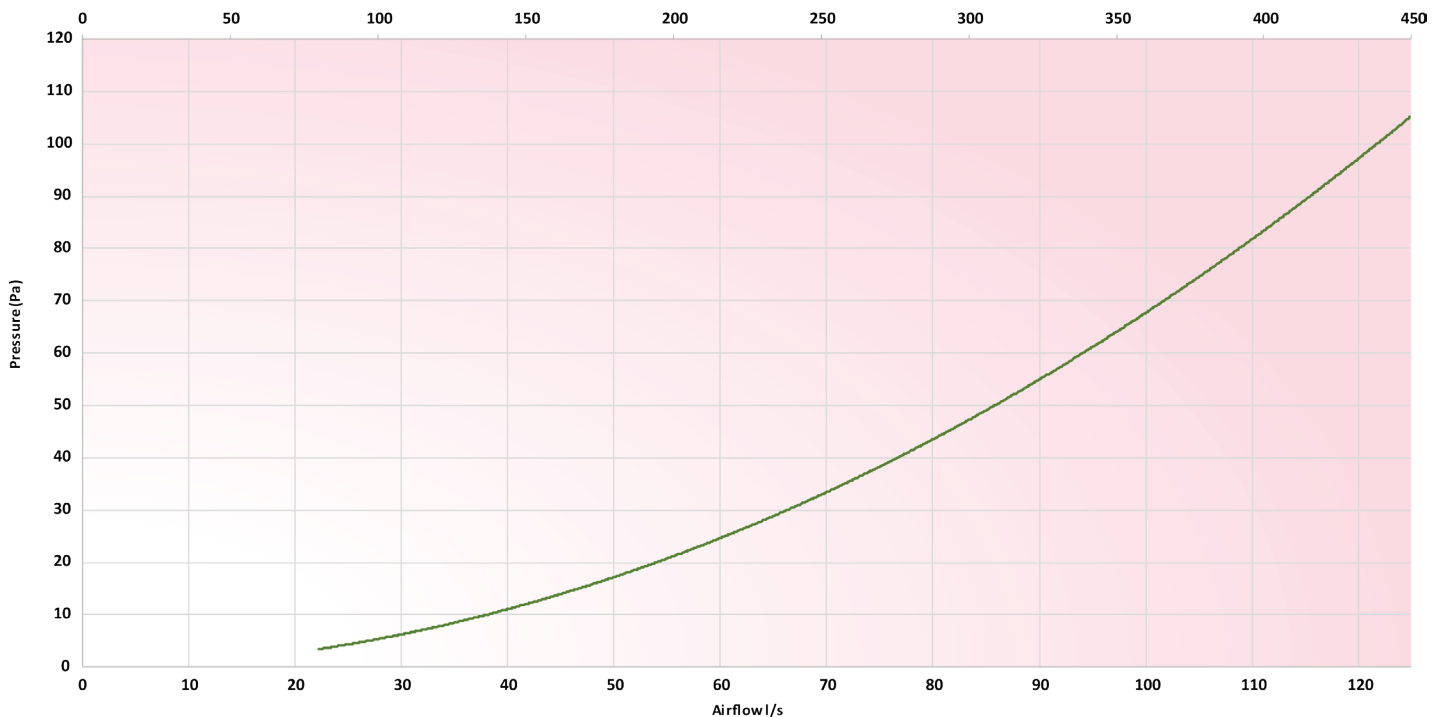
Top View



Technical Specification

Height	178.3mm
Width	304mm
Depth	262mm
Weight	1.8kg
Material	White painted steel

Pressure Curve



Zehnder ComfoTube distribution box 220, 1 x \varnothing 125mm connection, 6 x \varnothing 90mm ports with 4 x \varnothing 110mm end caps

Zehnder ComfoTube distribution box 350, 1 x \varnothing 160mm connection, 9 x \varnothing 90mm ports with 6 x \varnothing 110mm end caps

Article number: 990 323 071

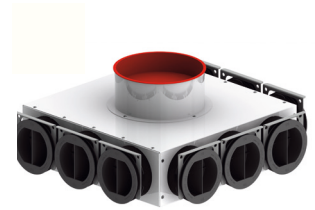
Description

Manifold:

Zehnder ComfoTube distribution box. Low profile compact design.

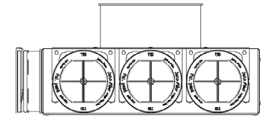
Suitable for use with the Zehnder ComfoTube \varnothing 90mm semi-rigid ductwork and comes complete with locking slides and end caps.

Suitable for installation in the building concrete structure

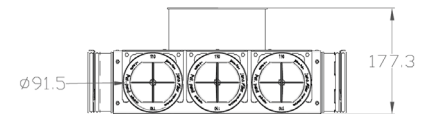


Dimensions

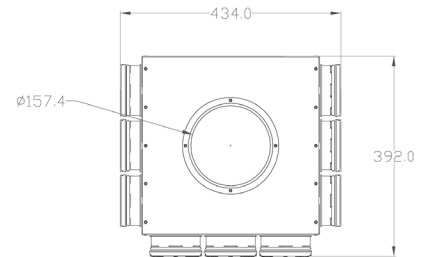
Side view



Front view



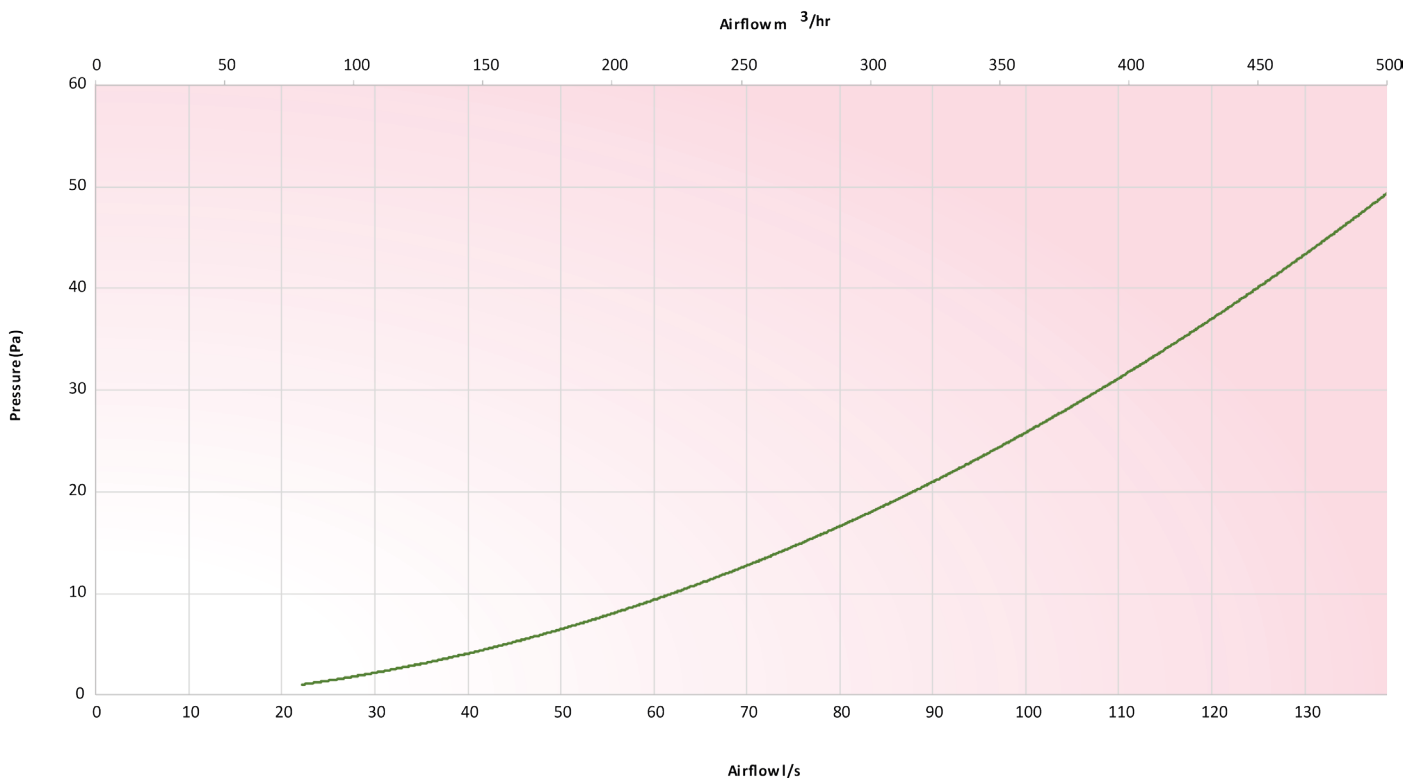
Top View



Technical Specification

Height	177.3mm
Width	434mm
Depth	392mm
Weight	3.52kg
Material	White painted steel

Pressure Curve



Zehnder ComfoTube distribution box 350, 1 x \varnothing 125mm connection, 9 x \varnothing 90mm port with 6 x \varnothing 110mm end caps

■ For use with Zehnder ComfoTube \varnothing 90mm semi-rigid ductwork.

CLD Grille housing - Frontal Sleeve 115mm

Article number: 990 320 845

Description

CLD Grille housing:

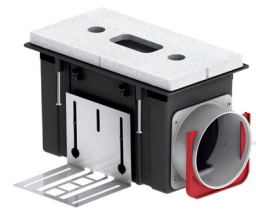
Rectangular frontal sleeve entry grille housing. The cleanable rectangular CLD grille housing is suitable for installation in all types of wall/floor/ceiling depending on the CLD height and comes complete with locking slides.

The rectangular designer grilles (300 x 200mm and 260 x 160mm) can be surface or flush-mounted dependent on preference. [A Zehnder ComfoFresh filter](#) can be used to remove particulates.

Technical Specification

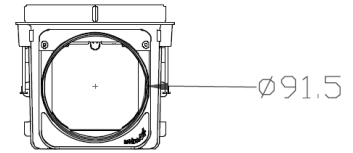
Height	115mm
Width	277.9mm
Depth	144mm
Weight	<0.8kg
Material	High-density polyethylene (HDPE)

■ For use with Zehnder CLD Designer grilles.

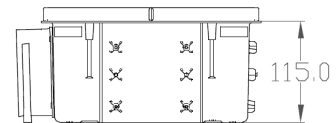


Dimensions

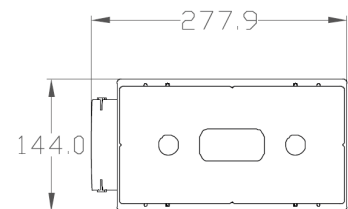
Side view



Front view



Top View



CLD Grille housing - Lateral Sleeve 115mm

Article number: 990 320 846

Description

CLD Grille housing:

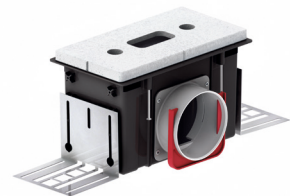
Rectangular lateral sleeve entry grille housing. The cleanable rectangular CLD grille housing is suitable for installation in all types of wall/floor/ceiling depending on the CLD height and comes complete with locking slides.

The rectangular designer grilles (300 x 200mm and 260 x 160mm) can be surface or flush-mounted dependent on preference. [A Zehnder ComfoFresh filter](#) can be used to remove particulates.

Technical Specification

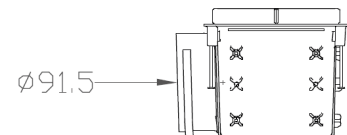
Height	115mm
Width	250mm
Depth	171.8mm
Weight	<0.8kg
Material	High-density polyethylene (HDPE)

■ For use with Zehnder CLD Designer grilles.

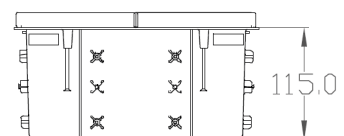


Dimensions

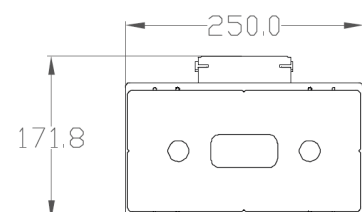
Side view



Front view



Top View



CLD Grille housing - Frontal Sleeve 140mm

Article number: 990 320 851

Description

CLD Grille housing:

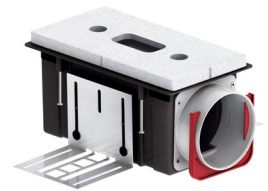
Rectangular frontal sleeve entry grille housing. The cleanable rectangular CLD grille housing is suitable for installation in all types of wall/floor/ceiling depending on the CLD height and comes complete with locking slides.

The rectangular designer grilles (300 x 200mm and 260 x 160mm) can be surface or flush-mounted dependent on preference. [A Zehnder ComfoFresh filter](#) can be used to remove particulates.

Technical Specification

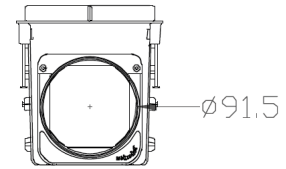
Height	140mm
Width	277.2 mm
Depth	144mm
Weight	<0.8kg
Material	High-density polyethylene (HDPE)

■ For use with Zehnder CLD Designer grilles.

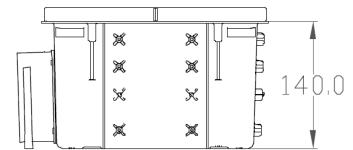


Dimensions

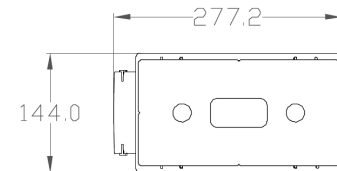
Side view



Front view



Top View



CLD Grille housing - Lateral Sleeve 140mm

Article number: 990 320 852

Description

CLD Grille housing:

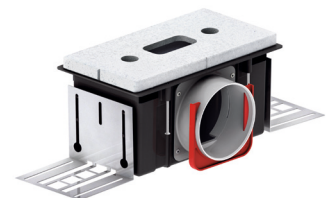
Rectangular lateral sleeve entry grille housing. The cleanable rectangular CLD grille housing is suitable for installation in all types of wall/floor/ceiling depending on the CLD height and comes complete with locking slides.

The rectangular designer grilles (300 x 200mm and 260 x 160mm) can be surface or flush-mounted dependent on preference. [A Zehnder ComfoFresh filter](#) can be used to remove particulates.

Technical Specification

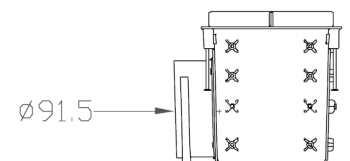
Height	140mm
Width	250mm
Depth	171.2mm
Weight	<0.8kg
Material	High-density polyethylene (HDPE)

■ For use with Zehnder CLD Designer grilles.

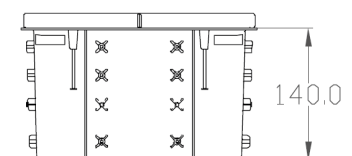


Dimensions

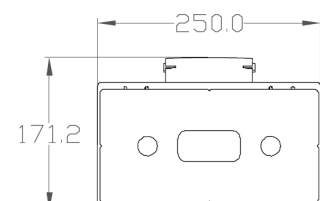
Side view



Front view



Top View



Grille housing TVA 90 connects 1 x \varnothing 125mm valve to 2 x \varnothing 90mm ports Zehnder ComfoTube, L198mm

Article number: 990 320 712

Description

TVA Grille housing

Circular grille housing. The cleanable circular TVA grille housing is suitable for installation in all types of wall/ceiling depending on the height and comes complete with locking slides.

The square (160 x 160mm) and circular designer grilles can be used in addition to any standard \varnothing 125mm valve. [A Zehnder ComfoFresh filter](#) can be used to remove particulates.

Technical Specification

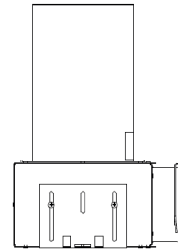
Height	308mm
Spigot length	198.5mm
Width	218.1mm
Depth	215.8mm
Weight	2.27kg
Material	Galvanised Steel

■ For use with TVA Designer grilles and \varnothing 125mm supply/extract

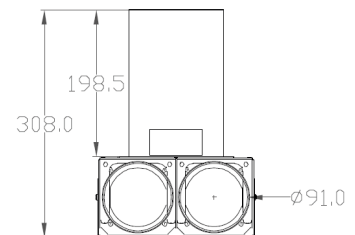


Dimensions

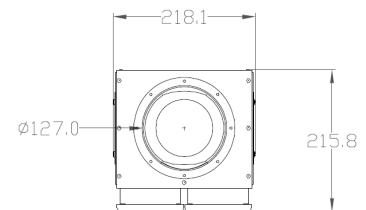
Side view



Front view



Top View



Grille housing TVA-P 90 connects 1 x \varnothing 125mm valve to 1 x \varnothing 90mm Zehnder ComfoTube, L64mm

Article number: 990 326 122

Description

TVA Grille housing

Circular grille housing. The cleanable circular TVA grille housing is suitable for installation in all types of wall/ceiling including set into concrete, depending on the height, and comes complete with locking slides. For installation into concrete the 990 326 127 mounting set is also required.

The square (160 x 160mm) and circular designer grilles can be used in addition to any standard \varnothing 125mm valve. [A Zehnder ComfoFresh filter](#) can be used to remove particulates.

Technical Specification

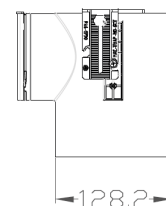
Height	166mm
Spigot length	64mm
Width	161.2mm
Depth	~170mm
Weight	<0.5 kg
Material	High-density polyethylene (HDPE)

■ For use with TVA Designer grilles, \varnothing 125mm supply/extract grilles and ComfoValve Luna

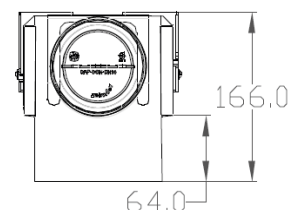


Dimensions

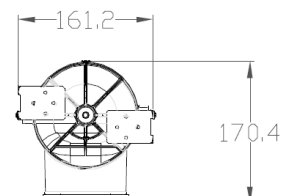
Side view



Front view



Top View



Grille housing TVA-P 90 connects 1 x \varnothing 125mm valve to 1 x \varnothing 90mm Zehnder ComfoTube, L300mm

Article number: 990 326 126

Description

TVA Grille housing

Circular grille housing. The cleanable circular TVA grille housing is suitable for installation in all types of wall/ceiling depending on the height and comes complete with locking slides.

The square (160 x 160mm) and circular designer grilles can be used in addition to any standard \varnothing 125mm valve. [A Zehnder ComfoFresh filter](#) can be used to remove particulates.

Technical Specification

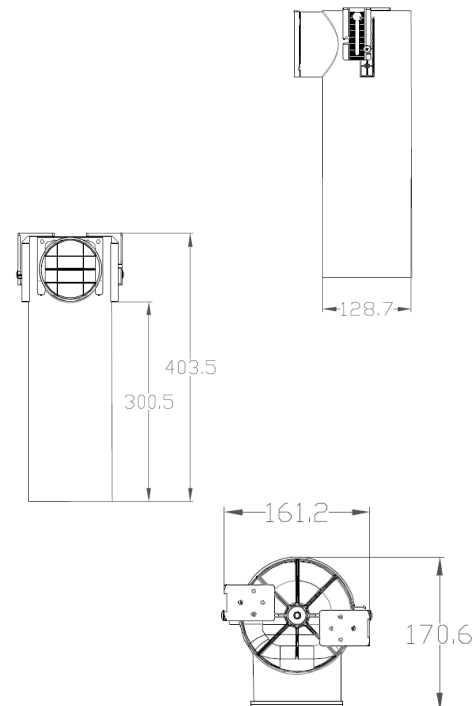
Height	403.5mm
Spigot length	300.5mm
Width	161.2mm
Depth	~170mm
Weight	<0.5 kg
Material	High-density polyethylene (HDPE)

Side view

Front view

Top View

Dimensions



■ For use with TVA Designer grilles, \varnothing 125mm supply/extract grilles and ComfoValve Luna

Rectangular grille housing, 1 x \varnothing 90mm connection to Lamina or Bilamina 400

Article number: 990 321 643

Description

Lamina / Bilamina Grille housing

Rectangular lateral sleeve entry grille housing. The cleanable rectangular lamina / bilamina grille housing is suitable for installation in all types of wall/ceiling depending on the height and comes complete with locking slides.

The rectangular lamina / bilamina grilles can be used and offer adjustable directional air supply.

Technical Specification

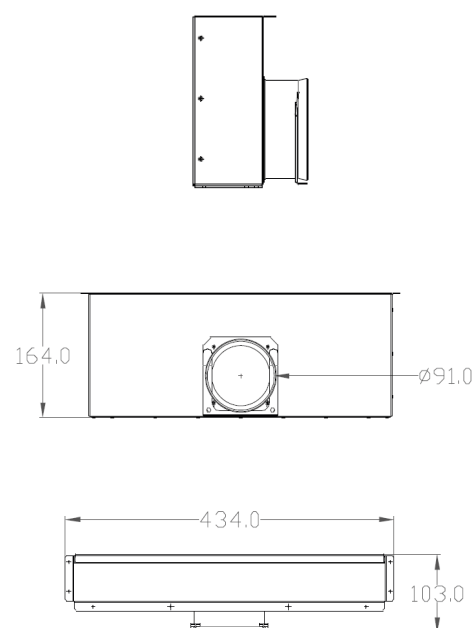
Height	164mm
Width	434mm
Depth	103mm
Weight	<2.8kg
Material	Galvanised Steel

Side view

Front view

Top View

Dimensions



■ For use with Lamina / Bilamina 400 rectangular grilles

Rectangular grille housing, 1 x Ø 90mm connection to Lamina or Bilamina 600

Article number: 990 321 661

Description

Lamina / Bilamina Grille housing

Rectangular lateral sleeve entry grille housing. The cleanable rectangular lamina / bilamina grille housing is suitable for installation in all types of wall/ceiling depending on the height and comes complete with locking slides.

The rectangular lamina / bilamina grilles can be used and offer adjustable directional air supply.

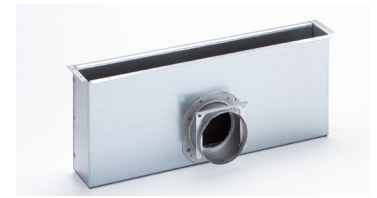
Technical Specification

Height	164mm
Width	634mm
Depth	103mm
Weight	<2.8kg
Material	Galvanised Steel

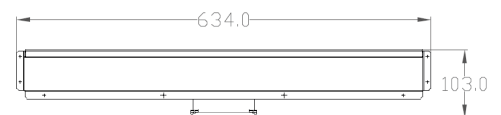
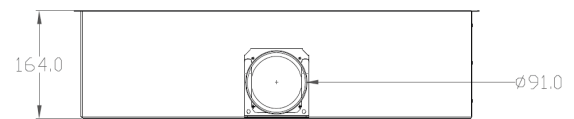
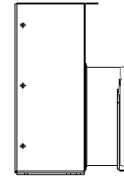
Side view

Front view

Top View



Dimensions



■ For use with Lamina / Bilamina 600 rectangular grilles

Rectangular grille housing, 2 x Ø 90mm connection to Lamina or Bilamina 600

Article number: 990 321 662

Description

Lamina / Bilamina Grille housing

Rectangular lateral sleeve entry grille housing. The cleanable rectangular lamina / bilamina grille housing is suitable for installation in all types of wall/ceiling depending on the height and comes complete with locking slides.

The rectangular lamina / bilamina grilles can be used and offer adjustable directional air supply.

Technical Specification

Height	164mm
Width	634mm
Depth	103mm
Weight	3kg
Material	Galvanised Steel

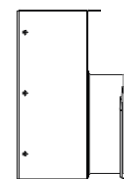
Side view

Front view

Top View



Dimensions



■ For use with Lamina / Bilamina 600 rectangular grilles

Rectangular grille housing, 2 x \varnothing 90mm connection to Lamina or Bilamina 400

Article number: 990 321 745

Description

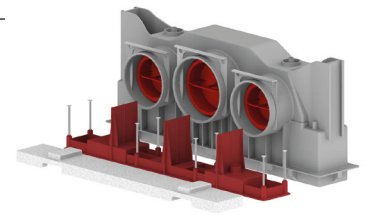
Lamina / Bilamina Grille housing

Rectangular lateral sleeve entry grille housing. The cleanable rectangular lamina / bilamina grille housing is suitable for installation in all types of wall/ceiling depending on the height and comes complete with locking slides.

The rectangular lamina / bilamina grilles can be used and offer adjustable directional air supply.

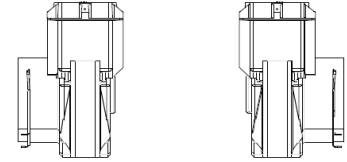
Technical Specification

Height	182mm
Width	439mm
Depth	115.4mm
Weight	1.05kg
Material	High-density polyethylene (HDPE)

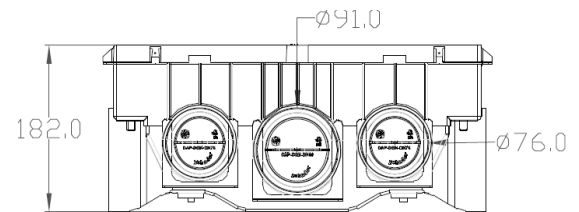


Dimensions

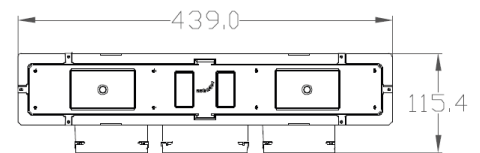
Side view



Front view



Top View



■ For use with Lamina / Bilamina 400 rectangular grilles

Renoventil housing, for \varnothing 90mm, length 400mm

Article number: 990 320 062

Description

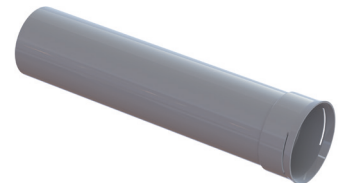
Renoventil Grille housing

Circular grille housing. The renoventil housing is perfect for refurbishments since the renoventil supply and extract grilles can be located close to the ceiling.

The renoventil grille housing comes complete with O-ring and locking slide.

Technical Specification

Length	435mm
Diameter	90-100mm
Weight	0.28kg
Material	High-density polyethylene (HDPE)



Dimensions

Side view



Front view



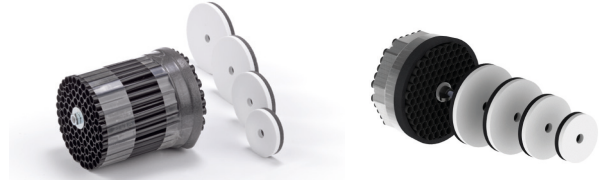
Top View



■ For use with Renoventil supply/extract grilles

Ancillaries - Zehnder ComfoTube ø 90mm, adjustable airflow regulator

Article number: 990 320 027 / 990 320 031



Description

Airflow regulator:

Zehnder ComfoTube adjustable airflow regulator. The airflow regulator has 5 different restriction settings to reduce the air volume silently.

The airflow regulator can be used at the manifold box or at the grille housing by inserting it into the ComfoTube ductwork.

Technical Specification

Length	75mm / 30mm
Diameter	74mm
Weight	<0.06kg
Material	Polypropylene

Ancillaries - Zehnder ComfoFresh filter

Article number: 990 320 032 / 990 320 573



Description

Grille housing filter:

Zehnder ComfoFresh filter for ø 125mm TVA and CLD grille housing. The filter is perfect to remove particles before they enter the ductwork and is quick and easy to install without interfering with the installed parts.

Technical Specification

	990 320 032	990 320 573
Length	165mm	
Diameter	125mm	
Height		9mm
Width		113mm
Depth		174mm
Filter grade	ISO Coarse <45% (G3)	
Weight	<0.018kg each	
Material	Polyester	

■ For use with TVA and CLD designer grilles and ø 125mm extract grilles

Ancillaries - Zehnder ComfoFresh Flat 51 to Zehnder ComfoTube 90mm convertor

Article number: 990 322 013

Description

Zehnder ComfoFresh Flat 51 to Zehnder ComfoTube \varnothing 75/90mm convertor:

Zehnder ComfoTube adjustable airflow regulator. The rigid connector can be used to convert Zehnder ComfoFresh Flat 51 to Zehnder ComfoTube \varnothing 90mm and comes complete with locking slides and O-rings.

Technical Specification

Height	97mm
Width	167mm
Depth	145mm
Weight	0.24kg
Material	High-density polyethylene (HDPE)

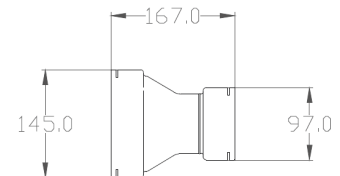
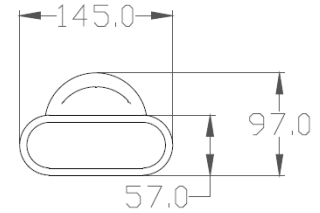


Dimensions

Side view

Front view

Top View



Ancillaries - Zehnder ComfoTube \varnothing 90mm, 90° bend

Article number: 990 322 153

Description

Rigid 90° bend:

Zehnder ComfoTube \varnothing 90mm, 90° bend. The rigid bend can be placed between two lengths of Zehnder ComfoTube \varnothing 90mm or directly into the manifold / mounting plate and comes complete with locking slides.

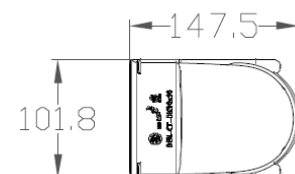
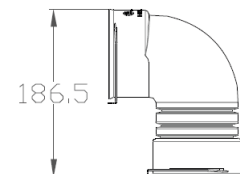
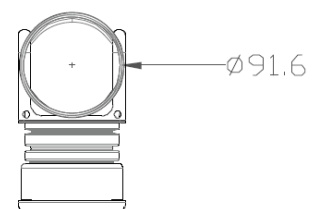


Dimensions

Side view

Front view

Top View



Ancillaries - Zehnder ComfoTube ø 90mm cross-piece

Article number: 990 322 155

Description

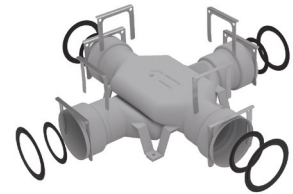
ComfoTube cross-piece:

Zehnder ComfoTube ø 90mm cross-piece. The compact cross-piece can be used to cross over two lengths of Zehnder ComfoTube ø 90mm in a height restricted space.

The cross-piece comes complete with locking slides and O-rings.

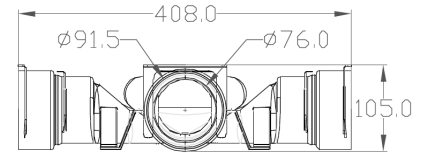
Technical Specification

Height	105mm
Width	408mm
Depth	408mm
Weight	1.2 kg
Material	High-density polyethylene (HDPE)

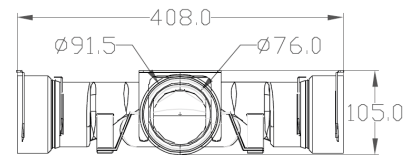


Dimensions

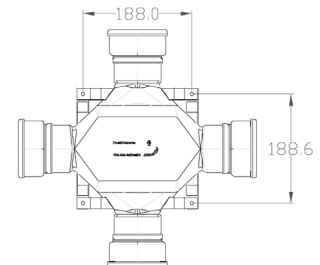
Side view



Front view



Top View



Ancillaries - Zehnder ComfoTube ø 90mm, locking slides, 10 pieces

Article number: 990 326 025

Description

Locking slide:

Zehnder ComfoTube ø 90mm, locking slide. The locking slide is used to secure the Zehnder ComfoTube ø 90mm ductwork without the need for messy sealants.

Technical Specification

Weight	0.042kg (each)
Material	Galvanised steel



■ For use with Zehnder ComfoTube ø 90mm [ComfoWell](#) / Grille housings

Ancillaries - Grille housing TVA-P mounting set for concrete application

Article number: 990 326 127



Mounting set:

Grille housing TVA-P 75/90 mounting set for concrete application. Used in conjunction with 64mm versions of the TVA-P to ensure quick installation to wooden framework prior to concrete being poured.

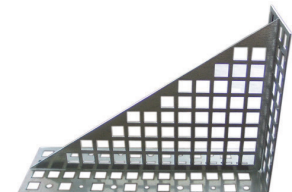
Technical Specification

Weight	0.08kg
Material	Polymer

■ For use with TVA-P L64mm versions

Ancillaries - 90° metal bracket for max 2 Zehnder ComfoTube

Article number: 990 327 109



Description

Metal bracket:

90° metal bracket for max 2 Zehnder ComfoTube. The mounting aid is to enable a 90 degree angle to be formed on Zehnder ComfoTube ø 90mm when attached to a horizontal surface.

Technical Specification

Height	200mm
Width	300mm
Depth	100mm
Weight	0.57kg
Material	Galvanised steel

Ancillaries - Zehnder ComfoFix link for ComfoTube ø 90mm, 10 pieces

Article number: 990 327 201

Description

ComfoFix mounting bracket:

Zehnder ComfoFix link for ComfoTube ø 90mm. The mounting bracket can be prefixed on the floor /wall/ceiling and allows the Zehnder ComfoTube ø 90mm to be clicked in place. Several brackets can also be linked on the horizontal or vertical level to fix Zehnder ComfoTube ø 90mm in place.

Over 50% of time can be saved on installation using ComfoFix when compared to installation using perforated metal banding without the risk of damage to the ductwork.

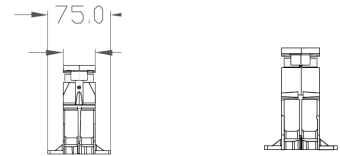
Technical Specification

Height	105.1mm
Width	119.7mm
Depth	75mm
Weight	0.09 kg (each)
Material	Glass fiber reinforced polypropylene

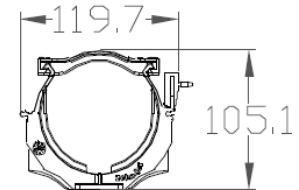


Dimensions

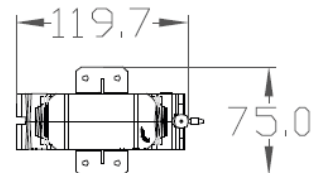
Side view



Front view



Top View



Ancillaries - Zehnder ComfoTube ø 90mm, pipe connector

Article number: 990 328 109

Description

Pipe connector:

Zehnder ComfoTube ø 90mm, pipe connector. The connector is used to join two lengths of Zehnder ComfoTube ø 90mm together to create an airtight and robust seal using O-rings.

Technical Specification

Length	177mm
Diameter ID	92mm
Diameter OD	98.5mm
Weight	0.13kg
Material	Medium-density polyethylene

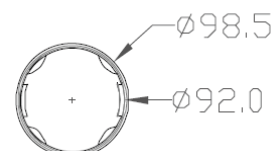


Dimensions

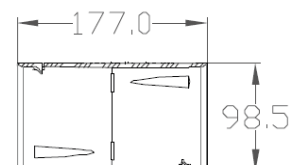
Side view



Front view



Top View



Zehnder ComfoTube ø 90mm, end caps, 10 pieces

Article number: 990 328 263



Description

End caps:

Zehnder ComfoTube end caps. The 90mm end caps can be placed within their corresponding Zehnder ComfoTube ø 90mm duct during the construction phase to prevent dust ingress. The 90mm end caps can also be placed directly into the 75mm manifold or mounting plate to seal off any unwanted ports.

Technical Specification

Length	53.3mm
Diameter	82mm
Weight	0.031 (each)
Material	Medium-density polyethylene

Zehnder ComfoTube ø 110mm, end caps, 2 pieces

Article number: 990 328 264



Description

End caps:

Zehnder ComfoTube end caps. The 110mm end caps can be placed within their corresponding Zehnder ComfoTube ø 110mm duct during the construction phase to prevent dust ingress. The 110mm end caps can be placed directly into the 90mm manifold or mounting plate to seal off any unwanted ports.

Technical Specification

Length	55.3mm
Diameter	102mm
Weight	0.05 (each)
Material	Medium-density polyethylene

Ancillaries - Zehnder ComfoTube ø 90mm, O-ring seal, 10 pieces

Article number: 990 328 363



Description

O-ring:

Zehnder ComfoTube O-ring seal. The O-ring is used to ensure an airtight connection is made with pipe connectors, grille housings, manifold/mounting plates and connecting elements.

Technical Specification

Outside diameter	98mm
Inside diameter	75mm
Weight	0.009kg (each)
Material	EPDM (Ethylene Propylene Diene Monomer)

BIM/CAD Components

If you would like to download the BIM / CAD files for this or any other of our products then please visit our BIM library.

TO VISIT OUR BIM/CAD LIBRARY

CLICK HERE

Installation Instructions

If you would like to download the installation files for this or any other of our products then please visit our download page by clicking the link below.

TO VISIT OUR DOWNLOAD PAGE

CLICK HERE

Our Informational Video



Watch our video on how to change the Zehnder ComfoFresh filter.

TO WATCH OUR VIDEO

CLICK HERE



Watch our video on how to clean the Zehnder ComfoFresh ductwork.

TO WATCH OUR VIDEO

CLICK HERE

Consultant specification

Specification

The semi-rigid ductwork shall be dual wall constructed of high-quality food-grade polyethylene (PE) with a crush resistant ring stiffness of $\sim 10.0 \text{ kN/m}^2$. It shall be suitable for installation into concrete with a fire rating in accordance with EN 13501 of E. It shall have an operating temperature range of -25 to $+60 \text{ }^\circ\text{C}$ and not be designed to exceed flowrates of 13.8 l/s .

The ductwork shall have SKZ certification along with a hygiene certificate and be accredited for use in SAP Appendix Q.

The ductwork shall be manufactured by Zehnder.

zehnder

always the
best climate